

Please Share With A Friend

THE WAYBILL

Mystic Valley Railway Society Newsletter
A Non-Profit Educational Corporation
1970-2020 Fifty Years of Service



credit R. Goelet

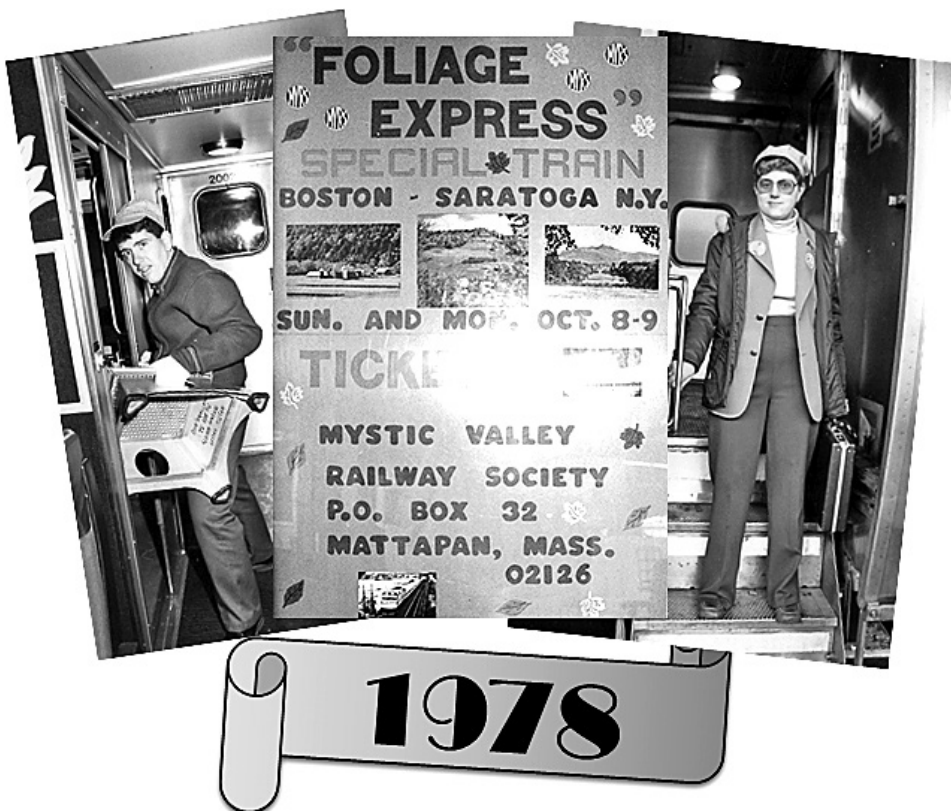


VOL. 51 NO. 2 ISSN 0897-7577 Got a question? Call us at 617-361-4445, 24 Hours • E-Mail at contactus@mysticvalleyrs.org
www.mysticvalleyrs.org

June - August 2020

FIFTY YEARS OF THE MVRs: Saturday – September 12, 2020 SPECIAL FARE: \$50 PP

Now includes the
2020 ANNUAL MEETING
(rescheduled from Sat May 2)



In the “Town of Seven Railroads” we’ll lunch at the Palmer Union Station designed by Henry Hobson Richardson and now home to The Steaming Tender Restaurant. Celebrate the Mystic Valley Railway Society’s fifty years as a non-profit educational corporation and watch a narrated presentation. Spend the afternoon exploring Randall’s Farm in Ludlow MA where you’ll find not only a greenhouse, deli/bakery and homemade ice cream at Elsie’s Creamery, but also a grocery featuring local produce and a large selection of allergen-free foods.

FEATURES:

Round trip comfortable motor coach
Brakeman’s Luncheon Buffet
MVRs history presentation
Anniversary souvenir for every passenger

TIMETABLE

8:30am	Braintree T (Exit 17, Rte 3)	6:30pm
9:00am	Wellington T (Rte 16 – Medford)	6:00pm
9:30am	Riverside T (Exit 22, 95/128)	5:30pm

All times are approximate and subject to change

** Western MA members and friends: join us at 11:30am in The Steaming Tender, 28 Depot Street, Palmer (same special fare)

Reserve in advance – capacity limited. Please read carefully and complete all details when requesting passage. Please include FULL NAMES OF ALL IN YOUR PARTY when completing this form. Tours run rain or shine. Timetable is subject to change. NO REFUNDS.



FIFTY YEARS OF THE MVRs

Saturday – September 12, 2020 SPECIAL FARE: \$50 PP



PLEASE PRINT ALL INFORMATION

Name(s): _____ Phone# _____
Address _____ Boarding Station _____
City/Town _____ State _____ Zip _____
Email _____
Emergency Contact Name & Phone # _____

Please make all checks payable to: Mystic Valley Railway Society, Inc. and mail to:
MVRs, P.O. BOX 365486, Hyde Park, MA 02136-0009. Thank you.

Information for handicapped Accessibility will be provided upon request. Your tickets and itineraries will be mailed about 5 days prior to departure.

Note: A service charge of \$20 will be assessed for returned checks.

NOTICE!

Deadline
for next
issue:
**Saturday
August 1,
2020**

Board of Directors 2020-2021

President - Theresa E. Rylko (Tracey)

Vice President Elect - Leo Mignace

Treasurer - Judy Berson-Hoyt

Recording Secretary - Nancy Roney

Directors:

Jeff Costello (*Acting Vice President till Annual Meeting*),
Lillian Garvey,
Nancy Juskin,
Eleanor Manning (Ellie),
William Manning (Billy),
Nancy Jeanne Martin,
Marcia Pennington

Deadline for Next Issue: August 1, 2020

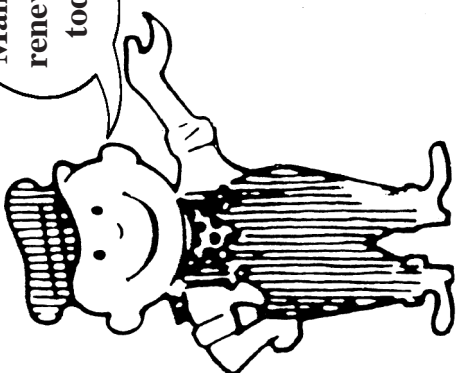
Include your previous address with
all address corrections



NON-PROFIT ORG.
U.S. POSTAGE
PAID
Boston, MA
Permit No. 58868

Mystic Valley Railway Society, Inc.
P. O. Box 365486
Hyde Park, MA 02136-0009

Mail your
renewal in
today!





From the President - Theresa E. Rylko

Happy New MVRS Year as we start our 50th! There have been a lot of changes, but the one thing that stays steady is your love for traveling with the club. Thank you for your interest. As you are aware, we are in a pandemic and may not travel at this time. It is a little difficult to social distance on a bus. As we wait for the actual date when businesses may start to reopen in Massachusetts and beyond, we have had to reschedule some of the trips. The Annual Meeting is

now combined with the 50th anniversary trip on Saturday September 12, 2020. The visit to Clark's Trading Post has been moved to Saturday August 15. As we get closer to each trip, we will decide whether it can safely run. We will not cash your check until certain the trip will go. Please look at www.mysticvalleys.org or call 617-361-4445 if you have any questions. Please follow your city's restrictions for social distancing and wearing a mask. Stay safe.

From the Acting Vice President – Jeff Costello

This is the most difficult editorial I have ever written. The world as we knew it altered rapidly. A tiny virus has caused unbelievable havoc – changing or ending lives, disrupting relationships, eroding the economy. I hope everyone is staying safe. Personally speaking, things have changed. We don't want to miss a minute of the lives of our two five-year-old granddaughters. They are growing so fast.

Mystic Valley Railway Society has adapted to the changing health situation with the directors meeting by teleconference instead of in person. Regrettably, we had to cancel the May trips. The annual meeting has been

rescheduled to Saturday September 12. We have adapted as well as we can. I chose not to stand for reelection but am still Acting Vice President as Leo Mignace, Vice President Elect, will not be sworn in until the September annual meeting.

Our trip team would still appreciate any ideas for future trips, places you have been and feel others would enjoy. Drop them a note with your ideas. The team keeps working under these difficult circumstances.

In the meantime, stay safe. Like the train in the children's book "The Little Engine that Could", we need to keep moving in the right direction.

From the Membership Chairman – Nancy Jeanne Martin

With all the crazy things going on I am not sure what to talk about but am trying to think positive. Relax. I believe that soon it will be warm, and we will be able to take the bus for one of our trips. I have already talked with some people on the phone and told them we are moving slow here in Massachusetts.

We had a teleconference board meeting in April. I do hope we can fill you in on things later. Tracey has been busy putting the membership information on the computer and then I will meet up with her somewhere

to get the cards and letters so I can mail them out. As of mid-April the society had 682 paid-up members, a mix of renewals and life members.

My cat has been very lazy and does not want to do much. Maybe she is just not used to having me home every day. Like lots of people I have been doing some cleaning out, but still have more to do. I also seem to sleep more than usual every night. Maybe I just need the sleep. I am thinking of all my MVRS friends and hope you are all doing well. Peace.

From the MVRS Legal Counsel – Robert M Nathan

Massachusetts Courts During Covid-19

The state's Supreme Judicial Court has announced that courthouses in Massachusetts will remain closed to the public through at least Monday June 1 as a result of the coronavirus pandemic. The decision to extend the court restrictions comes as Governor Baker also extends the state's stay at home advisory and the closure of non-essential businesses until at least Monday May 18.

Although all courts in the Commonwealth will be open to conduct court business, courthouses will continue to be closed to the general public. The announcement from our state's highest court said that jury trials in both criminal and civil cases are being postponed to Wednesday July 1 at the earliest and that trials conducted by judges without a jury are being postponed until at least Monday June 1. These dates could be extended, as necessary, depending on the status of the pandemic. In the meantime, all court clerks, as well as registry and recording offices, will continue to accept the filing of any documents in both emergency and non-emergency matters, to schedule and facilitate hearings, to issue orders and to answer questions from attorneys, litigants and the general public.

From the Waybill Editor – Roma Hertel

This slimmed-down Waybill has just four pages with no new trips. The effects of the coronavirus pandemic stand in the way of planning new trips or even rearranging existing ones. Getting in touch with closed attractions and restaurants is proving difficult. It will not be business-as-usual when the current lockdowns start to be lifted.

The Opening Up America Again guidelines say non-essential travel can only resume in Phase Two and it is not clear when the areas we visit will enter the first phase never mind the second. As I write in late April, MA Governor Baker has just extended the non-essential business closure by two weeks to Monday May 18. Before welcoming our group, the vendors that make our trips possible must have in place protections for their employees and our passengers. As a minimum, each must have a disinfection program and also main-

tain social distancing. On page 3 you can read about another country's approach. In Lines From Ireland, James Scannell reports on the precautions being taken there to ensure passenger safety on public transportation. Even as social distancing and travel restrictions are gradually lifted, until a vaccine becomes available, then covering your face when outside the home will remain wise.

We all know that small businesses are taking a big hit right now. Once the world starts opening up and you are ready to engage with others outside your home, please remember those local operations you want to be the bedrock of your community. Think about the restaurants, the museums, the tourist railroads, the membership organizations. Support these enterprises to help them regain a foothold on the economic ladder.

Riding the Rails

By Robert A. LaMay



A pair of NYC E8s lead
New England States through
Newtonville MA on 9/29/1951



B&A Steam 4-6-6-T #403 with Train
191 at Newtonville MA on 7/14/1948



New Haven Steam 4-8-2 #1300
pushes freight at Branford CT
(undated)



Central Vermont Steam 2-8-02 #475
with Fan Trip Special at Palmer MA
on 5/08/1949



NYC Alco RS3 #8225 with Local at
Brookline MA on 2/25/1953 (now
part of the MBTA Green Line)



NYC Alco RS3 #8214 with Local at
Eliot MA on 2/22/1952 (now part of
the MBTA Green Line)

British train sheltered in US during World War 2 – Dirk Hertel

COVID-19 has restricted travel and stranded some far from home. This was also the fate of the London, Midland & Scottish Railway's Coronation Class No. 6220 at the outbreak of World War 2. This record-breaking streamlined Pacific locomotive and its Coronation Scot express train had been stars at the 1939 New York World's Fair. It had achieved glory on 29 June 1937 by clocking 114mph but broke more than the steam speed record of 113mph previously held by the rival London & North Eastern Railway. Not slowing down quickly enough, it entered a series of reversing curves at 37mph

above the posted 20mph and a fair amount of dining car crockery also got broken.

Though LNER then reclaimed the record in 1938 when their newly streamlined Pacific Mallard achieved 126mph, the Coronation was revered. By September 1939 it was in Baltimore harbor awaiting return passage to England. Instead, with German U-boats prowling the Atlantic, the train was temporarily sheltered in the US. The crimson Coronation locomotive eventually reached England in 1942, with its coaches following four years later, then remained in service until 1963.

MEMBERSHIP APPLICATION

The Mystic Valley year runs from April 1 - March 31

Here's what's included:

- Our quarterly paper, *The Waybill*, filled with pictures and schedules of RR events.
- Exclusive members-only tours to unique activities and locations.
- Color Railroad calendar with 12 frameable prints (while supplies last).
- Annual Calendar Color Slide Contest for members.
- Railroad Socials.
- Membership card, The Mystic Valley Pass.
- Railroad films and guest speakers available upon request.

Membership Fees & Classes

1. **Regular Membership** (one person) \$10
2. **Family Membership**
Price of regular membership for one member plus \$4 per additional person living in the same house with regular member. All are full members with only one copy of every mailing mailed to the family address.
3. **Life Membership** (one person, U.S.A. only) \$125
4. For membership outside the U.S.A., please double the above fees (remit in U.S. currency only).

Calendars will be mailed to all current members as stated above and not necessarily presented at time of joining (while supplies last).

Discover
New England
By Train!

PLEASE INCLUDE A SELF-ADDRESSED STAMPED ENVELOPE

Mail to:
MYSTIC VALLEY RAILWAY SOCIETY, INC.
c/o Membership Committee
P.O. Box 365486, Hyde Park, MA 02136-0009
☐ Check here if this is an address change

Name: _____

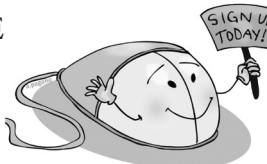
Address: _____

City/Town: _____ State: _____ Zip: _____

Please include telephone number (with area code) _____

Email: _____

Family members (no separate mailings). Please list full names: _____



Got a Question:

call us at 617-361-4445 (24 hours) or online at:
www.mysticvalleys.org

_____ NEW _____ RENEWAL	
_____ Regular Membership	\$ _____
_____ at \$10 per person	
_____ at \$4 per additional person	\$ _____
_____ to the price of the regular	
_____ Membership	
_____ Life Membership	\$ _____
_____ at \$125 per person (U.S.A. only)	

Tax deductible donations to a 501(c)(3) organization are gratefully accepted.

TOTAL AMOUNT ENCLOSED \$ _____

If you join more than once in the membership year, it will be considered a donation. Please send a SASE, a #10 business size envelope. Cards will be mailed to you in 5-6 weeks. There will be a \$20 service charge for returned checks.

TRAIN SHOWS & EXCURSIONS

By popular demand! To publicize an event please mail details to Mystic Valley Railway Society – Attn: Train Show Column, P.O. Box 365486, Hyde Park MA 02136 or else email contactus@mysticvalleys.org.
Publication deadline: see page 4.

• **Sat. 6-20-20 and Sun. 6-21-20 (10am-4pm): Pioneer Live Valley Steamers Father's Day Weekend Public Meet**, 108 Hillside Road, Southwick MA. Donation for parking. \$5 per person; \$20 max. Info: pvls.org

• **Sat. 8-1-20 (9am-4pm): South Shore Model Railway Club & Museum Summer Open House**, Bare Cove Park - Building 51, 52 Bare Cove Park Drive, Hingham MA. \$2 general admission; free 4 & under (with adult). Info: ssmrc.org

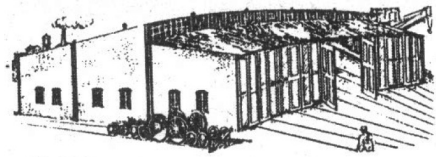
• **Sun. 9-20-20 (10am-3:30pm): Old Colony Model Railroad Club, 20th Annual Model Train Show**, Taunton Holiday Inn, Myles Standish Blvd, Route 495 (exit 9), Taunton MA. All gauges. \$5 per person; free under 12 & scouts in uniform (with adult). Info: 508-285-3963

• **Sat. 10-17-20 and Sun. 10-18-20 (10am-4pm): Nashua Valley Railroad Association RailFair 2020**, Boxboro Registry Hotel, 242 Adams Place, Boxboro MA. Two-day admission. Adult \$8, free under 12 & scouts in uniform (with adult). Info: showchair20@nvrra.com and NVRRA.com

Reminder:
these listings are provided as a courtesy.
Please check all details before attending.



The Roundhouse



CN and Canadian Pacific have been quietly sharing their rail lines to transport essential goods to communities in need during protest blockades of Canada's rail lines, the Canadian Broadcast Corporation [CBC] reported on Tue 2/25/20. Protesters have crippled freight and passenger rail traffic on CN's line for more than two weeks. The blockades have been organized in solidarity with the Wet'suwet'en Nation, whose hereditary chiefs oppose the construction of a natural gas pipeline through northern British Columbia. On Monday 2/24/20, Ontario Provincial Police arrested 10 demonstrators on CN's line near Belleville in order to get rail traffic moving. But the CBC — citing government sources — reported that a very "rare" collaboration between CN and CP resulted in CN trains circumventing the blockades using alternate routes, including some through the United States, to make deliveries of essential goods to Quebec and other communities facing shortages. Transport Canada and Transport Minister Marc Garneau's office approached the two companies and helped negotiate the rail-sharing deal, which remains active in parts of Canada still dealing with the blockades, the CBC reported. Garneau said the collaboration will not address the freight backlog completely, but it will help. The above problems have nothing to do with COVID-19. [Railfan Legal]

RAILPACE Magazine has been publishing a monthly rail news magazine since 1982. It emphasizes news from the Northeast US and Eastern Canada. I have quoted it frequently in this column. Beginning with the March 2020 edition it has a new owner: White River Productions of Bucklin MO. The first issue under White River ownership looks very familiar. Tom Nemeth remains Editor-in Chief. The regional editor for New England remains Jack Armstrong. White River has authorized converting Railpace to an all color publication.

From a New England Rail Passenger Authority email dated Fri 3/20/20 about Amtrak Downeaster service until further notice

tice due to the coronavirus pandemic:

- Beginning Tuesday, March 17, 2020 Train 688 and Train 689 will be suspended. All other trains will operate as scheduled.
- Beginning Wednesday, March 18, Train 683 and Train 684 will also be suspended. All other trains will operate as scheduled.
- Beginning Saturday, March 21, the Downeaster will operate the following on weekends: Trains 692, 693, 694 and 695.

Additional changes are anticipated, and passengers were urged to visit Amtrak.com for the most recent information.

The northbound Amtrak Auto Train derailed on Thu 3/26/20 near Deland FL. No passengers were injured, but one employee suffered non-life-threatening injuries. All of the derailed cars were auto carriers, and no passenger cars overturned. Some of the auto carriers were on their sides. [Daytona Beach News-Journal].

TRAINS rode Autotrain. Here is a quick summary. Sleeping car passengers still get decent meal service, coach passengers cannot use the dining car. Amtrak refused the magazine's request to interview Auto Train Managers. A lot of Amtrak riders read TRAINS. It makes no sense to refuse to make managers available for an interview.

SAN PEDRO, LOS ANGELES (KABC, Thu 4/2/2020) -- An engineer deliberately ran a train off the tracks at high speed near the Port of Los Angeles in an attempt to crash into the USNS Mercy hospital ship, prosecutors say. The Pacific Harbor Line train derailed on Tue 3/31, running through the end of the track and crashing through barriers, finally coming to rest about 250 yards from the docked naval ship.

Federal prosecutors allege train engineer Eduardo Moreno, 44, of San Pedro intended to hit the ship, saying he thought it was "suspicious" and did not believe "the ship is what they say it's for." The train crashed into a concrete barrier at the end of the track, smashed through a steel barrier and a chain-link fence, slid through one parking lot and then a second lot filled with gravel and hit a second chain-link fence. It came to rest after passing under a ramp leading to the Vincent Thomas Bridge. The train remained in that position Wednesday.

FROM RAILPACE APRIL 2020 ISSUE: On Wed 2/12/2020 PAS train AD-1 discovered a collapse in the Hoosac Tunnel 300 to 400 feet east of the West Portal in North Adams MA. LML Construction of Tillamook OR was hired to repair the damage. On that day train 11R was combined with train EDBF at East Deerfield MA and sent north on the Conn River Line to Belows Falls VT before going west over the tough grades of VRS's Green Mountain RR to Rutland VT, then south over the former Rutland RR main line to rejoin PAS rails at Hoosick Junction NY. Trains ran with a mix of PAR and VRS locomotives. Automobile traffic (normally routed from Mechanicville NY to the unloading facility at Ayer MA or to the Providence and Worcester connection at Gardner MA for the unloading facility at Davisville RI) was embargoed for lack of a detour route. Empty autoracks were parked on the double track between Shelburne Falls and Buckland MA.

Apparently, CSX has been uncooperative with PAR [Pan Am Railways] and PAS in limiting the number of detours over the old Boston and Albany line. If you would like to see a YouTube video on the repair activity at West Portal, check out: <https://youtu.be/Wip1Q3m1RNY>

[Good news update: the Hoosac tunnel was reopened on Sat April 4.]

The May 2020 issue of TRAINS has more New England material than usual as well as some important national news. There is a new CEO coming to Amtrak: William Flynn will take over in mid-April. He is 66 years old and recently retired recently as CEO of Atlas Air Worldwide. His air experience is with cargo not passengers. He worked for CSX from 2000 to 2002 and with CSX affiliate, Sea-Land Services. Current CEO Richard Anderson will remain until the end of 2020 as an advisor.

The big New England story in May TRAINS is a 6-page article on New Hampshire's Conway Scenic. The current owners are Dave and Rhonda Swirk. They bought it from founder, Dwight Smith. TRAINS did an extensive interview with Mr. Smith covering the early days of the Conway Scenic. In 1968 he bought CN 0-6-0 steam switcher

and had it shipped to Rigby Yard in Maine without having found a place to run it. Later in 1968 he rode a railfan trip in B&M Budd cars to North Conway. He decided that this was the place. He formed a partnership with the owners of the old railroad buildings, Carroll P. Reed and William Levy. At this point the B&M still owned the track and was running an occasional local freight train until 1972. North Conway Depot was built in 1874 by Boston Architect Nathan J. Bradlee in the Russian revivalist style. The modern Conway Scenic was also described including the Vista Dome Rhonda Lee.

The Conway Scenic article also mentioned one of my favorite books: High Green and the Bark Peelers by RM Neal. Shortly after World War II the author, a Missouri journalism professor, wrote to B&M President French saying he was interested in writing a book about a New England Railroad in the steam to diesel transition era. He received a favorable reply and rode several B&M trains, sometimes in the locomotive cab. He interviewed a number of long time B&M employees. His book is a vivid portrait of the B&M as it was in the brief happy time just before the disastrous drop in freight and passenger revenue. The first part of the title is obvious: upon approaching a three-light signal with a clear indication, the fireman would call to the engineer "High Green". The second part is less obvious. In the New Hampshire mountains there were still some men who earned their living peeling bark off trees and shipping it out on the B&M. The author found this business a little quaint. Sometimes used copies of this book are available on Amazon.

Both TRAINS and RAILPACE report that Pennsylvania's famous East Broad Top will run again. The East Broad Top Railroad and Coal Company (EBT) is a 3 ft (914 mm) narrow gauge historic railroad headquartered in Rockhill Furnace PA. Numerous railfans have bemoaned the loss of this historic treasure. Now a non-profit foundation has been formed to buy it from its owners and operate it. The announcement was made by Wick Moorman, retired CEO of both Amtrak and CSX.

Lines from Ireland

On March 11th the Irish Government introduced sweeping measures to prevent the spread of the Coronavirus (COVID-19) by closing public libraries and cancelling all St. Patrick's Day events. This was followed shortly afterwards by the closure of schools, and all non-essential places of employment including all shops and stores except food and convenience shops/stores. People were instructed to work from home and observe social distancing on public transport. Only highlighted designated seats could be used on buses, trams and trains. This practice is still in force at the end of April and is likely to be extended until the Fall. On Monday March 30th buses and trains in the Republic of Ireland began working to a Saturday timetable from Monday to Friday. Further reductions in services commenced April 1st, under which the service frequency on the DART was reduced to one train every 30 minutes instead of one every 10 minutes. However, this does increase to one every 15 minutes for an hour in the morning and the evening to facilitate essential workers. Similar reductions were made in the frequency of Outer Suburban and Inter-City services and will remain in force until social distance protocols of people keeping 2 meters apart from each other are lifted.

Dublin Bus and Go-Ahead Ireland which provide bus services in the Greater Dublin

Area started working to a Saturday timetable and limiting the numbers of passengers on double deck buses to 6 downstairs and 10 upstairs using only designated seats. On buses with a mid-body door, passengers enter by the front door and exit by the mid-body door. On buses with a front door only, passengers do not board until those on board have exited.

Luas services continued to operate as normal but with seating restrictions. On March 30th a Red line Luas was involved in an early morning crash with a truck at the Queen Street/Benburb Street intersection in downtown Dublin. The driver of the Luas tram was injured but none of the three passengers on board were. The line was closed for several hours while an accident investigation was carried out before the damaged Luas vehicle was removed to the Red Cow depot to undergo damage assessment and repair.

On May 5th the Irish Government was due to review the current lockdown and restrictions in force and announce new guidelines based on medical advice to-hand at that time.

Steam train trips scheduled to be operated by the Railway Preservation Society of Ireland and other heritage railroad operators have been suspended until further notice.

March to May 2020

By James Scannell

News from Britain

Planning application submitted for Cairngorm Funicular Railway Repair

A planning application has been submitted by the Highlands and Islands Enterprise to the Highland Council and Cairngorm National Park Authority for repairs to Britain's highest railway, closed since September 2018 due to structural problems. Opened in 2001, the railway connects a base station with a restaurant and a wider ski center 3,599ft up Cairn Gorm mountain near Aviemore, Scotland. The planned work would see the railway returned to full operational use. It has been estimated that the repairs will run to about US\$13M, while the cost of scrapping then removing the structure is estimated to be more than US\$17M. Removing or repairing the railway will be a complicated process as it will have to be done in such a way that minimizes impact on the 4,084ft Cairn Gorm mountain, one of Scotland's best known summits.

HS2 construction receives green light despite lockdown

During April the British Government gave formal approval for construction work on phase one of the High Speed 2 project from London Euston to Birmingham which is scheduled to be completed between 2028-

2031. HS2 is intended to connect London, Birmingham, Manchester and Leeds, and it is hoped that the project will reduce passenger overcrowding and help rebalance the UK economy through investment in transport links outside London.

HS2 work at Birmingham uncovers 1837 railroad turntable

Excavations at Birmingham's former Curzon Street station have unearthed a Robert Stephenson-designed railroad turntable thought to date back to 1837. The find includes the base of the central turntable, the exterior wall, and the inspection pits that surround it.

Transport for Wales reports first drop in rail journeys in 24 years

In 2019 the number of rail journeys taken in Wales dropped for the first time in 24 years, from 33.6M journeys in 2018 to 33.5M in 2019. 2019 was the first full year that Transport for Wales, owned by the Welsh Government, has been operating rail services. The reduction in rail journeys was put down to line closures due to flooding and to fewer international rugby games played in the National Stadium, Cardiff.



MEMBER-O-GRAM

The Roundhouse columnist **Bill McCaffrey** sends best wishes for good health to the MVRS family. He has set himself the goal of encouraging companies like Microsoft and Adobe to include the word “railfan” in their spell check software.

Director **Nancy Roney** and her son **Joe** visited Hawaii [English-language spelling] from Mon 3/9 to Tue 3/24, leaving Boston as things were starting to shut down. Their first week was in Honolulu visiting her daughter and son-in-law. For the second week they visited the Big Island and were able tour Hawai’i [Hawaiian-language spelling] Volcanoes National Park, despite limited staffing and no programs. It was fascinating to see the Volcano Hotel which overlooked the crater of Mauna Loa volcano. There has been a hotel there since the 19th century. The day was overcast so not much color. All was quiet with the volcano, but it was interesting to see steam coming from the ground. In 2018 it erupted, causing a substantial change in the park. They planned to stop at the Laupahoehoe Train Museum near Hilo but weren’t able to get to it. The island takes some time to drive around. (Columnist and calendar editor **Dirk Hertel** remembers riding this narrow-gauge steam tourist railroad in 1992. It originally transported sugarcane to the mills, powered by sugarcane cutoffs.)

Nancy also sent this link <https://imemories.us/2Wi0ZPt> to a film her late husband (and MVRS director from 1970-1984) **Mike Roney** took on a 1973 trip out west that was probably organized by the MVRS.

Booking Conditions



“We expect people to act respectful in a cordial manner. We also expect our passengers to follow instruction from supervised personnel on all transportation vehicles, i.e., trains, buses, boats, etc. It is important instructions be followed to maintain safety of all participants.

If any passenger is disruptive or refuses to follow direction they are subject to be prohibited from taking part in future trips. To be clear we consider non-compliance with safety directive to be a serious matter as well as use of foul language and disruptive conduct. Any of these behaviors will be grounds for prohibition of participation in future trips and events.”

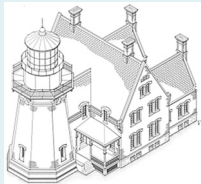
Handicapped Information

The Mystic Valley Railway Society, Inc., endeavors to provide its passengers with information regarding the accessibility of and facilities available for the benefit of our handicapped ridership. In doing so, we make inquiries of the facilities visited and equipment used on each of our trips. Accordingly, since we merely convey this information, we cannot be held responsible for its accuracy.

If you are not self-sufficient and have special needs, you must travel with a companion who can provide assistance to you. By making a reservation for a trip, you are certifying that you do not have any mental, physical or other medical/disability condition that could compromise your safety or that of other trip participants. If you are uncertain about the demands or difficulties of a particular trip or event, please call us for details.

BLOCK ISLAND Saturday – July 18, 2020 FARE: \$99 PP standard fare \$20 PP optional bus tour

Sail away to this special place named for Dutch explorer Adrian Block. Plenty of time for lunch on your own in Old Harbor plus browsing in the waterfront shops and galleries of this Rhode Island classic. And why not add on the optional bus tour? You’ll tour the entire island, from the North Light to the Southeast Light and everything in between.



FEATURES:

Round trip comfortable motor coach
Point Judith ferry
Three-and-a-half hours on your own

TIMETABLE

7:00am	Wellington T (Rte 16 – Medford)	7:00pm
7:30am	Riverside T (Exit 22, 95/128)	6:30pm
8:00am	Braintree T (Exit 17, Rte 3)	6:00pm

All times are approximate and subject to change



Reserve in advance – capacity limited. Please read carefully and complete all details when requesting passage. Please include FULL NAMES OF ALL IN YOUR PARTY when completing this form. Tours run rain or shine. Timetable is subject to change. NO REFUNDS.

BLOCK ISLAND

Saturday – July 18, 2020



\$99 PP standard fare
☐ \$20 PP optional bus tour

PLEASE PRINT ALL INFORMATION

Name(s): _____ Phone# _____
Address _____ Boarding Station _____
City/Town _____ State _____ Zip _____
Email _____
Emergency Contact Name & Phone # _____

Please make all checks payable to: Mystic Valley Railway Society, Inc. and mail to: MVRS, P.O. BOX 365486, Hyde Park, MA 02136-0009. Thank you.
Information for handicapped Accessibility will be provided upon request. Your tickets and itineraries will be mailed about 5 days prior to departure.
Note: A service charge of \$20 will be assessed for returned checks.

CAPE COD MUSIC CRUISE

Sunday – July 12, 2020 FARE: \$105 PP

Back by popular demand! First stop is lunch at Bailey’s Surf and Turf in East Wareham MA. Then we’ll head to the quaint village of Onset and board our Cape Cod Canal cruise on the smooth waters of this seven-mile stretch of the Atlantic Intracoastal Waterway. Sit back and relax on a lazy Sunday afternoon as you view scenery and tap your toes along with the music.

FEATURES:

Round trip comfortable motor coach
Bailey’s Surf and Turf, Wareham MA
Music cruise on the canal



TIMETABLE

9:00am	Wellington T (Rte 16 – Medford)	7:00pm
9:30am	Riverside T (Exit 22, 95/128)	6:30pm
10:00am	Braintree T (Exit 17, Rte 3)	6:00pm

All times are approximate and subject to change



Reserve in advance – capacity limited. Please read carefully and complete all details when requesting passage. Please include FULL NAMES OF ALL IN YOUR PARTY when completing this form. Tours run rain or shine. Timetable is subject to change. NO REFUNDS.

CAPE COD MUSIC CRUISE

Sunday – July 12, 2020 FARE: \$105 PP
MEAL CHOICES:



- ☐ Chicken piccata
- ☐ Homemade pot roast
- ☐ Homemade crabcakes



PLEASE PRINT ALL INFORMATION

Name(s): _____ Phone# _____
Address _____ Boarding Station _____
City/Town _____ State _____ Zip _____
Email _____
Emergency Contact Name & Phone # _____

Please make all checks payable to: Mystic Valley Railway Society, Inc. and mail to: MVRS, P.O. BOX 365486, Hyde Park, MA 02136-0009. Thank you.
Information for handicapped Accessibility will be provided upon request. Your tickets and itineraries will be mailed about 5 days prior to departure.
Note: A service charge of \$20 will be assessed for returned checks.

NEW DATE!

BRING THE FAMILY

Saturday – August 15, 2020 FARE: \$99 PP

Spend the day at Clark’s Trading Post in Lincoln NH with many included activities: a troupe of trained black bears; the steam-powered White Mountain Central Railroad; Chinese acrobats; five on-site museums; and a quick Segway ride. Shop at the gift shops. Lunch is included at your choice of the Peppermint Saloon, the Popcorn Wagon, Pullman’s Pizza & Subs, or the Whistle Stop Snack Bar.

FEATURES:

Round trip comfortable motor coach
Five hours on your own
Unlimited rides and shows
Lunch on your own (included)
Optional: pay extra on-site for a longer Segway tour



TIMETABLE

7:00am	Braintree T (Exit 17, Rte 3)	8:30pm
7:30am	Riverside T (Exit 22, 95/128)	8:00pm
8:00am	Wellington T (Rte 16 – Medford)	7:30pm

All times are approximate and subject to change



Reserve in advance – capacity limited. Please read carefully and complete all details when requesting passage. Please include FULL NAMES OF ALL IN YOUR PARTY when completing this form. Tours run rain or shine. Timetable is subject to change. NO REFUNDS.

BRING THE FAMILY

Saturday – August 15, 2020 FARE: \$99 PP



NEW DATE!



PLEASE PRINT ALL INFORMATION

Name(s): _____ Phone# _____
Address _____ Boarding Station _____
City/Town _____ State _____ Zip _____
Email _____
Emergency Contact Name & Phone # _____

Please make all checks payable to: Mystic Valley Railway Society, Inc. and mail to: MVRS, P.O. BOX 365486, Hyde Park, MA 02136-0009. Thank you.
Information for handicapped Accessibility will be provided upon request. Your tickets and itineraries will be mailed about 5 days prior to departure.
Note: A service charge of \$20 will be assessed for returned checks.