

Please Share With A Friend

THE WAYBILL

Mystic Valley Railway Society Newsletter
A Non-Profit Educational Corporation
1970-2019 • Almost 50 Years of Service



credit R. Goelet



VOL. 50 NO. 2 ISSN 0897-7577

Got a question? Call us at 617-361-4445, 24 Hours • E-Mail at contactus@mysticvalleyrs.org

JUNE - AUGUST 2019

www.mysticvalleyrs.org

BUTTERFLIES IN DEERFIELD

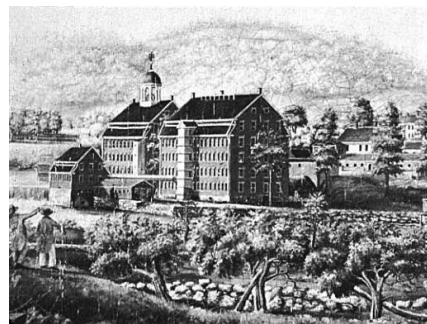
SATURDAY – MAY 25, 2019



Details on page 5

Different Faces of Lowell

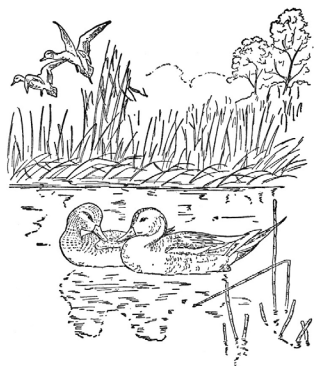
SATURDAY – JUNE 22, 2019



Details on page 5

Cruisin' the Connecticut

SATURDAY – JULY 6, 2019



Details on page 5

Mt. Washington Cog Railway

SUNDAY – JULY 14, 2019



Details on page 8

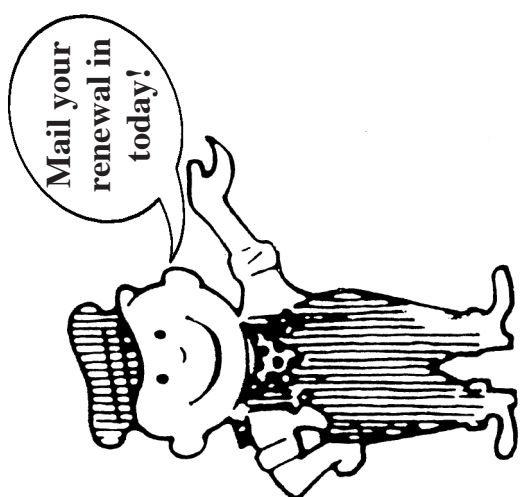


OVERNIGHT TRIP - TRAINS IN MAINE SEE PAGE 3 FOR DETAILS



NON-PROFIT ORG.
U.S. POSTAGE
PAID
Boston, MA
Permit No. 58868

Mystic Valley Railway Society, Inc.
P. O. Box 365486
Hyde Park, MA 02136-0009



Deadline for Next Issue: August 1, 2019

Include your previous address with
all address corrections



NOTICE!

Coming Soon!
2020
New England
Railroading
Calendar
Available
Late Summer

**MEMBERSHIP
RENEWAL**
April 1, 2019 -
March 31, 2020



**Keep the Good
Times Rolling**

Details on Page 2



From the President - Theresa E. Rylko

Happy New Year as we start our 49th year. There have been a lot of changes, but one thing stays steady. That is your love for traveling with the club. Thank you for your help in passing Waybills out in your area. Please let us know if you have a place that

From the Vice President - Jeff Costello

Spring has arrived. Of course, after such a mild winter, I suppose we shouldn't have been surprised when the largest snowfall of the year hit us in early March. Now the sun is sharing its warmth and bringing a rush of activity. In the meantime, at our Annual Meeting and Appreciation we will welcome a new board member, award the 2019 Russell Rylko Grant to two recipients, and view the 2020 MVRs calendar.

Mystic Valley Railway Society also is still very active. More trips, some differ-

From the Membership Chairman – Nancy Jeanne Martin

If you are still waiting for your membership card, please be patient. When Tracey receives all the renewals, she prints the letter and membership card(s) then gives them to me for mailing out in your SAE. I am involved in several other activities so sometimes it takes me a while to mail them all out. I currently have a bag full of cards full of letters and cards to be mailed out soon.

From the MVRs Legal Counsel – Brad Pinta

Bicycle Season is upon us

Spring is here, summer is coming, and that means more people will be using their bicycles. If you are planning to ride your bike this season, doing it safely should be your top priority. Taking a leisurely ride on your bike where there are no motor vehicles around is one thing, but if you are riding on the road with motor vehicles, you must take the necessary steps to protect yourself. Some motorists dislike sharing the roadways with bicyclists who have as much right to the road as motor vehicles. Some motorists feel that like motorcycles, bicycles are not always easy to spot and may appear to come out of nowhere and create hazardous conditions.

From the Waybill Editor – Roma Hertel

Hearing from a reader validates being Waybill editor for me. It proves that at least one person has not only read the Waybill but also cares enough to voice an opinion about content.

Another pleasure is meeting one of our regular contributors in person. I was fortunate enough to finally meet Lines from Ireland columnist James Scannell in February while passing through Dublin Airport on the way back from the UK. We'd tried in February 2018 but were foiled by The Beast from the East (from Siberia!) – a massive snowstorm that severely impacted Ireland, a country normally protected from

you would like the club to visit. If you have a note you wish to put under Member-o-Gram please send it in attention the Waybill editor and it will be included in an upcoming edition. Remember this is your Waybill and the best way to communicate with other

ent – from butterflies and a canal boat tour, to a 2-day trip to see two Maine railroads. The Wiscasset, Waterville and Farmington narrow gauge railway and Boothbay Railway Village shared the 2018 Russell Rylko Grant and we will be viewing how their projects used the grant money. Looking ahead, being a train man, I'm eagerly anticipating the Trains in Maine trip in June, being familiar with both railways we will be visiting. I hope you will join us, railfan or not.

As you can see, we are still busy, but we

I am looking forward to a number of trips especially the one to Mt Washington. I belong to the Mt Washington Observatory and they send me four newsletters a year. There is always an article by the cat "Marty". He says he "... likes to sleep in warm places and when the snow comes, he has to forego his outdoor naps for a warm spot in the rotunda. I get lots of treats ..."

There are many common causes or factors leading to bicycle accidents with cars. A typical example is when a car fails to yield and make a left turn in front of an approaching bike; or when a car makes an abrupt right turn after passing a bicycle on the right; or if a car door is opened into the direct path of an approaching bike. Unfortunately, motorists who are impaired or distracted while driving pose the greatest risk for bicyclists.

So, what can you do for your own safety? Remember that when riding your bike on the roadways, you are obligated to obey all traffic laws, including stop signs and red lights. You can be ticketed by the police as any motorist might be for these traffic viola-

harsh winter weather by the warming influence of the Gulf Stream. However, this year February was a completely different story: the predominant weather pattern was high pressure and a mild southerly wind (from Africa!).

We purposely planned a few hours between flights and came out through security to see James who had crossed Dublin by public transport specially to meet us. After identifying each other by what else but a copy of the Waybill, we sat down over cups of tea. James began contributing to the Waybill in the 1990s after learning through the grapevine about a train organi-

members. Thank you for your comments and concerns concerning your membership. Our membership year runs from April 1 to March 31. We use the first year of the membership for coding the Waybill, so this year will be coded M19.

would appreciate your input. If you have a place of interest or a favorite restaurant, share details with the trip team. We always like new ideas. Speaking of new ideas, my wife and I (the train enthusiast) we will be boarding The Rocky Mountaineer in Canada for a two-day train trip and then a tour through the Rocky Mountains. I'm looking forward to the train! We'll share our adventures with Mystic Valley Railway Society Members.

When you reach the top ask if Marty is around and would like a visit.

I am looking forward to the Different Faces of Lowell trip with its canal tour and also visit to the birthplace of Whistler's mother. I hope it is a sunny day for Butterflies in Deerfield because they fly around more in the sun.

Bicyclists are also required to wear a helmet if you are 16 years old or younger (but it's always a good idea...), to have a white light facing forward and a red light facing backwards on your bike when riding from 30 minutes before sundown until 30 minutes after dawn and likewise, if riding at night, then your pedals either need reflectors facing back and front or these must be on your ankles facing back and front. You can ride your bicycle on any roadway except highways, private ways and limited access roads where signs prohibit riding.

Have a safe bicycle season this year!

zation looking for material. His interests in transportation and local history were a natural fit and his column has been winging its way across the Atlantic Ocean ever since, educating us on how Ireland plans and operates its public transportation system. The International News is an added bonus.

All too soon it was time to go back through security, but not before taking the photo you can see in Member-o-Gram on page 4. Since I began editing the Waybill, we had been exchanging emails but now I have fond memories of an all-too-brief meeting on a warm sunny February day at Dublin Airport. That's an intangible gain.

TRAIN SHOWS & EXCURSIONS

By popular demand! To publicize an event please mail details to Mystic Valley Railway Society – Attn: Train Show Column, P.O. Box 365486, Hyde Park MA 02136 or else email contactus@mysticvalleys.org. Publication deadline: see page 4.

• **Sat. 5-18-19** (9am-4pm): **Chester On Track**, Chester Railway Museum, off Rt. 20, Chester MA. Free (donations accepted). Info: <http://www.chesterrailwaystation.net/>, David Pierce: 413-354-7878, dpiercelp@aol.com

• **Sat. 5-18-19** (10am-3pm): **North Shore Model Railroad Club Flea Market**, Lakeside Inn, 595 North Ave, Wakefield MA. Suggested donation \$3 adult; kids free. Info: <http://www.nsmrc.org/flea/>

• **Sat. 6-15-19** and **Sun. 6-16-19** (10am-3pm): **Pioneer Valley Live Steamers**, Fathers' Day Weekend Public Meet, 108 Hillside Road, Southwick MA. Parking donation: \$5 per person or \$15 maximum. Train rides are free. Info: www.pvls.org

• **Fri. 6-28-19** (1-4pm), **Sat. 6-29-19** (8am-6pm) and **Sun. 6-30-19** (8am-2pm): **43rd Yankee Engine-uity Show**, Central Massachusetts Steam, Gas & Machinery Association (CMSGMA), Orange Airport, 80 Airport Street, Orange MA. Info: Grover Ballou Jr. 413-253-9574, www.cmsgma.com/2019-ENGINE-SHOW

• **Sat. 9-7-19** (10am-4pm) and **Sun. 9-8-19** (10am-3pm): **Glory Days Festival 2019**, Town of Hartford Parks & Rec, 100 Railroad Row, White River Junction VT. Free admission, \$15 excursion train rides, \$10 Saturday night photo shoot. Info: 802-362-5036, recreation@hartford-vt.org, www.vtglorydaysfestival.com

• **Sun. 9-22-19** (10am-3:30pm): **Old Colony Model Railroad Club**, 19th Annual Model Train Show, Taunton Holiday Inn, Myles Standish Blvd, Route 495 (Exit 9), Taunton MA. \$5 adult; free under 12 (with adult) and scouts in uniform. Info: 508-285-3963

• **Sun. 9-22-19** through **Sat. 9-28-19** (9am-9pm each day): **Railroading at Cumberland Fair**, 197 Blanchard Rd, Cumberland ME. \$12 adult, free under 12 (with adult), \$5 senior 65+ (Tuesday and Thursday only), \$60 weekly pass, free parking. Info: www.470rrclub.org/downloads/CumberlandFairRailroadingFlyer2019.pdf

• **Sun. 9-22-19** (9am-3pm): **Southern Connecticut Model Train Show**, Greenwich Civic Center, 90 Harding Road, Greenwich CT. \$7 adult, free under 12 (with adult). Info: <http://www.southernct-trainshow.com/>

• **Sat. 9-28-19** (10am-3pm): **Phillips Rail Fest 2019**, 21 Depot Street, Phillips ME. Info: 207-639-2630, therussiangrunt@hotmail.com, <https://phillipsrailfest.weebly.com/>

Reminder:

These listings are provided as a courtesy. Please check all details before attending.

MEMBERSHIP APPLICATION

The Mystic Valley year runs from April 1 - March 31

Here's what's included:

- Our quarterly paper, *The Waybill*, filled with pictures and schedules of RR events.
- Exclusive members-only tours to unique activities and locations.
- Color Railroad calendar with 12 frameable prints (while supplies last).
- Annual Calendar Color Slide Contest for members.
- Railroad Socials.
- Membership card, The Mystic Valley Pass.
- Railroad films and guest speakers available upon request.

Membership Fees & Classes

1. **Regular Membership** (one person) \$10
2. **Family Membership**
Price of regular membership for one member plus \$4 per additional person living in the same house with regular member. All are full members with only one copy of every mailing mailed to the family address.
3. **Life Membership** (one person, U.S.A. only) \$125
4. For membership outside the U.S.A., please double the above fees (remit in U.S. currency only).

Calendars will be mailed to all current members as stated above and not necessarily presented at time of joining (while supplies last).

PLEASE INCLUDE A SELF-ADDRESSED STAMPED ENVELOPE

Mail to:
MYSTIC VALLEY RAILWAY SOCIETY, INC.
c/o Membership Committee
P.O. Box 365486, Hyde Park, MA 02136-0009
☐ Check here if this is an address change

Name: _____

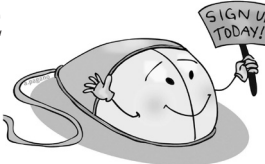
Address: _____

City/Town: _____ State: _____ Zip: _____

Please include telephone number (with area code) _____

Email: _____

Family members (no separate mailings). Please list full names: _____



Got a Question:

call us at 617-361-4445 (24 hours) or online at: www.mysticvalleys.org

_____ NEW _____ RENEWAL	
_____ Regular Membership	\$ _____
_____ at \$10 per person	
_____ at \$4 per additional person	\$ _____
_____ to the price of the regular Membership	
_____ Life Membership	\$ _____
_____ at \$125 per person (U.S.A. only)	
_____ Tax deductible donations to a 501(c)(3) organization are gratefully accepted.	
TOTAL AMOUNT ENCLOSED	\$ _____

If you join more than once in the membership year, it will be considered a donation. Please send a SASE, a #10 business size envelope. Cards will be mailed to you in 5-6 weeks. There will be a \$20 service charge for returned checks.

Board of Directors 2019 - 2020

President - Theresa E. Rylko (Tracey)

Vice President - Jeffrey Costello (Jeff)

Treasurer - Judy Berson-Hoyt

Recording Secretary - Nancy Roney

Directors:

Lillian Garvey, Nancy Juskin,
Eleanor Manning (Ellie),
William Manning (Billy),
Nancy Jeanne Martin,
Joseph McDonough (Joe),
Marcia Pennington

Positions They Fill

Boutique - Marcia Pennington
Communications/Radios/Defibrillators -
Jeff Costello

Mailing Chair - Billy Manning
Membership Chairs - Ellie Manning &
Nancy Jeanne Martin

Photography/Calendar - Dirk Hertel
Social Event Chair - Ellie Manning
Trade Show Coordinators - Joe McDonough
Treasurer, Emeritus - Albert W. Avjian
Trip Team - Judy Berson-Hoyt,
Ellie Manning, Tracey Rylko
W Russell Rylko Grant Committee Chair -
Jeff Costello

Web Master/Computer - Dan Ouellette
Waybill Mailing Coordinator - Tracey Rylko
Waybill Editor/Button Maker - Roma Hertel



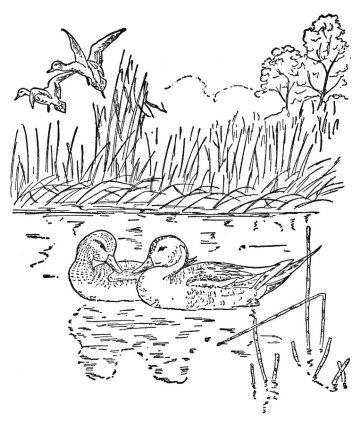
CRUISIN' THE CONNECTICUT

Saturday – July 6, 2019 FARE: \$99 PP

Enjoy a summer's day in South Hadley MA. After a delicious buffet lunch at The Boathouse, embark on our only river trip this summer. We will board the Lady Bea for a private 90-minute cruise viewing sights along the Connecticut River. This is a brand-new trip – don't miss out on our maiden voyage.

FEATURES:

- Round trip comfortable motor coach
- Lunch buffet at The Boathouse
- Connecticut River Cruise



TIMETABLE

8:30am	Braintree T (Exit 17, Rte 3)	8:00pm
9:00am	Wellington T (Rte 16 – Medford)	7:30pm
9:30am	Riverside T (Exit 22, 95/128)	7:00pm

All times are approximate and subject to change

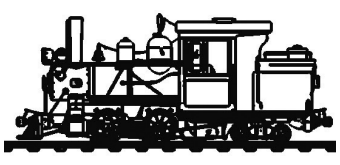
TRAINS IN MAINE

Saturday June 1 – Sunday June 2, 2019

Come Downeast, first stop Alna ME. Spend the afternoon at the Wiscasset, Waterville & Farmington narrow gauge railway and learn how a 2018 Rylko Grant helped fund the Trout Brook Bridge Project. Lunch is included, along with an engine shop tour and train ride. Our hotel will be the lovely Boothbay Harbor Inn, with a buffet dinner and the opportunity to explore the town on foot. Check out Sunday after breakfast then it's a short drive to Boothbay Railway Village where their Railway Post Office Car project was partially funded by a 2018 Rylko Grant. Here you'll take another shop tour and train ride, plus get the chance to view traditional buildings, historic farm equipment, classic cars and a model railroad exhibit. Lunch is not included but you can get a meal at the rest stop on the way back home.

FEATURES:

- Round trip comfortable motor coach
- One-night hotel stay
- Three meals included
- Wiscasset, Waterville & Farmington Railway Museum
- Boothbay Railway Village



Write or call for full itinerary

FARE (non-refundable payment due at booking):
\$300 pp double occupancy
\$75 single supplement



TIMETABLE

7:00am, Sat 6/1	Braintree T (Exit 17, Rte 3)	8:00pm, Sun 6/2
7:30am	Riverside T (Exit 22, 95/128)	7:30pm
8:00am	Wellington T (Rte 16 – Medford)	7:00pm

All times are approximate and subject to change

CRUISIN' THE CONNECTICUT

Saturday – July 6, 2019 FARE: \$99 PP



PLEASE PRINT ALL INFORMATION

Name(s): _____ Phone# _____
Address _____ Boarding Station _____
City/Town _____ State _____ Zip _____
Email _____
Emergency Contact Name & Phone # _____

Please make all checks payable to: Mystic Valley Railway Society, Inc. and mail to: MVRs, P.O. BOX 365486, Hyde Park, MA 02136-0009. Thank you.
Information for handicapped accessibility will be provided upon request. Your tickets and itineraries will be mailed about 5 days prior to departure.
Note: A service charge of \$20 will be assessed for returned checks.

TRAINS IN MAINE

Saturday June 1 – Sunday June 2, 2019



PLEASE PRINT ALL INFORMATION

Name(s): _____ Phone# _____
Address _____ Boarding Station _____
City/Town _____ State _____ Zip _____
Email _____
Emergency Contact Name & Phone # _____

Please make all checks payable to: Mystic Valley Railway Society, Inc. and mail to: MVRs, P.O. BOX 365486, Hyde Park, MA 02136-0009. Thank you.
Information for handicapped accessibility will be provided upon request. Your tickets and itineraries will be mailed about 5 days prior to departure.
Note: A service charge of \$20 will be assessed for returned checks.

International News - February - April 2019 by James Scannell

First section of London U.K. brand new Tube signaling goes live

In March Transport for London (TfL) announced that the first section of brand-new signaling set to transform nearly half of the Tube network had commenced operation. The new Thales signaling system, which will boost capacity on four Tube lines, is now operating between Hammersmith and Latimer Road, the first part of the network to benefit from the improvements.

The new signaling system will allow trains to run closer together on the Circle, District, Hammersmith & City and Metropolitan lines, meaning the train frequency will increase in central London from 28 to 32 per hour when complete. It will also improve the reliability of these lines. The frequency increases will be introduced from 2021, with the project targeted for completion in 2023. This will lead to a capacity increase of a third on the four lines, equivalent to the space for an extra 36,500 customers during peak times.

This modernization programme will eventually transform the oldest parts of the Tube network into one of the most modern railways in the world, providing better customer information and making journeys quicker and more comfortable. The new, state-of-the-art signal control centre at Hammersmith is already operational, and the new S-stock Tube trains have been running exclusively on the four lines since 2017.

TfL completes 'sale and leaseback' of Elizabeth line trains to 345 Rail Leasing Consortium

TfL has completed a sale and leaseback deal for the new Class 345 'Elizabeth line' trains to 345 Rail Leasing - a consortium comprising Equitix Investment Management Ltd, NatWest and SMBC Leasing. The deal, which was approved by TfL's Finance Committee in December, will release approximately US\$1.10bn to TfL. This will be reinvested in infrastructure

across London's transport network, including delivering a fleet of new Piccadilly line trains, the first of which will appear in London from 2023.

Rolling stock leasing is standard practice across the rail industry, with rolling stock leasing companies owning the vast majority of the UK rail fleet and leasing it to train operating and freight operating companies. Similar leasing deals have previously enabled TfL to introduce new trains onto London Underground since it began running services in November 2007.

Due to their unique nature, leasing options are currently not suitable for the procurement of new rolling stock on the London Underground network. This is why TfL has pursued the sale and leaseback with the Elizabeth line train fleet.

Major Metrolink (Manchester U.K) Mileage Magic

On the afternoon of March 20th Tram 3006 became the first M-5000 Metrolink vehicle to clock up 1,000,000 kilometers. The vehicle, which was first introduced to the network in February 2010, moved into seven figures as it pulled into Altrincham. The occasion was marked with a special message from the driver Ady Leigh as well as a celebratory one-off message on the vehicle's electronic display.

Greater Manchester (U.K) takes top European transport strategy award

In March, as part of European Mobility Week, Greater Manchester received the Sustainable Urban Mobility Plan (SUMP) award for its sustainable transport strategy. This is presented by the European Commission to city-regions that can demonstrate innovate and effective transport planning. This year's award focused on good practice in planning for multimodal travel. Greater Manchester received the award for its "excellent spatial approach". The jury also noted "ambitious modal share goals" and "integra-

tion of new technology".

Transport for Greater Manchester (TfGM)'s chair, Councillor Mark Aldred, accepted the award at a ceremony in Brussels, Belgium. Greater Manchester was shortlisted for the award against Basel (Switzerland) and Dresden (Germany).

Multi-million milestone for Manchester (U.K.) busy bus way

Over three million passenger journeys have been made on services using the

Leigh to Ellenbrook Guided Busway over the past year. This equates to around 580,000 fewer automobile journeys across the regional highway network each year, which is positive news in terms of improving air quality and reducing congestion. Operated by First Manchester, the service launched in April 2016 and has clocked up 7.8 million journeys in its first three years.

Calling all Members!

ARE YOU LOOKING FOR ACTIVITY??



NEW FRIENDS
TRAVEL OPPORTUNITIES
REWARDING EXPERIENCES
WAYS TO HELP OTHER MEMBERS
or SHARE A CAREER SKILL??



ALL ABOARD with the Mystic Valley Volunteers – the activities are as varied as their locations. Auto transportation is essential for some events, but many are located on the MBTA routes and may gather at special locations or at members' homes. Is distance an impediment? **NO WAY**, for we have dedicated members in many states and foreign countries who complete their activity by letter or E-Mail. Remember: volunteering allows you to share your talents and interests with those who would benefit most.

TO JOIN THE FUN Please request a volunteer form by submitting your request & membership number to: **M.V.R.S. P. O. Box 365486, Hyde Park, MA 02136-0009** or visit our Website **www.mysticvalleyrs.org**.

WHAT HAPPENS NEXT? Your request is presented at our regular meeting so that you will be contacted by the appropriate chairperson. From there it is up to you how involved you wish to be, for the level of activity and variety of trips offered by the Society are solely determined by the level of participation supplied by our volunteer members. **WELCOME ABOARD!**

MEMBER-O-GRAM

It was a fine sunny morning on Monday 2/25 in Dublin, when Waybill Columnist **James Scannell** (center) met up with **Dirk and Roma Hertel** (left and right), Calendar Producer and Waybill Editor respectively. See From the Waybill Editor on page 2. Note the lush grass behind us, and the lack of coats. Spring flowers were in abundance on that side of the Atlantic – the snowdrops were finished, while crocus were past their peak and there was many “a crowd, a host, of golden daffodils” all around.



2019 Rylko Grant Update

Information for prospective candidates regarding the 2019 Rylko Grant was posted on the Society web site during December 2018. The deadline for submission was March 15, 2019. Submissions were received from railroad-oriented non-profit organizations from Massachusetts and Maine. In the near term, these submissions will be reviewed by the Grant Committee and co-recipients will be announced. The awards will be presented at the Mystic Valley Railway Society 2019 Annual Meeting to be held Saturday May 4, 2019. Additional information will be forthcoming at www.mysticvalleyns.org.



HEAR YE! HEAR YE!

The Call Goes Out To All Groups! 10 For 10



Group Sales Policy: 10 or more tickets purchased in ADVANCE by the SAME PERSON will be entitled to a 10% DISCOUNT subject to availability.

BLOCK SPACE may be arranged on any non-restricted event with Ticket Coordinator or Tour Director (when assigned) at least 50 days prior to departure. For further information, please contact the Mystic Valley Railway Society, 617-361-4445 or e-mail at contactus@mysticvalleyns.org.

Railroad Boutique



A selection of gifts and unique items with a RAILROAD FLAIR
All prices US\$, including shipping & tax

_____ 2019 N.E. Railroading Calendar, 40th edition: 14 full-color views \$8.00

CATCH ALL THE TRAINS YOU EVER MISSED

_____ Vintage New England Railroading Calendars \$4.00 each OR 3 for \$10.00

Available: 86____, 87____, 94____, 00____, 13____, 14____, 15____, 16____, 17____, 18____

_____ 12 full-color frameable calendar prints of N.E. Railroading (our choice) \$3.00

_____ **EXCLUSIVE** Mystic Valley Railway Society 2" diameter sew-on cloth patch: \$1.50

_____ Flashing RR-crossing LED pin \$3.00

_____ Gold-colored 1" train locomotive pin \$5.00

Small train books for children from Dover Publications

Choose from 2 sets, each with 3 different titles: 3 books for \$6.00

_____ Set 1: Famous Train Stickers, Little Train Stickers & Trains Activity Book

_____ Set 2: Little Train Sticker Activity Book, Train Stickers & Train Station Activity Book

All orders require payment by money order, cashier's check, or personal check
Quantities limited

Ship to:

Name _____

Address _____

City/Town _____ State _____ Zip _____

Telephone _____ Total amount enclosed: \$ _____

Please allow 2-4 weeks delivery. Make checks payable to Mystic Valley Railway Society
Send orders to: M.V.R.S. – MAIL ORDER, P.O. BOX 365486, Hyde Park MA 02136-0009
(\$20 service charge applies to checks returned by the bank)



Find us on
Facebook

www.facebook.com/MysticValleyRailwaySociety

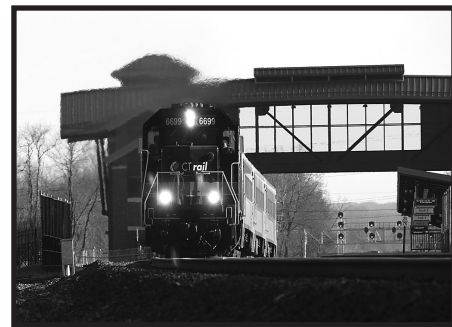


Riding the Rails

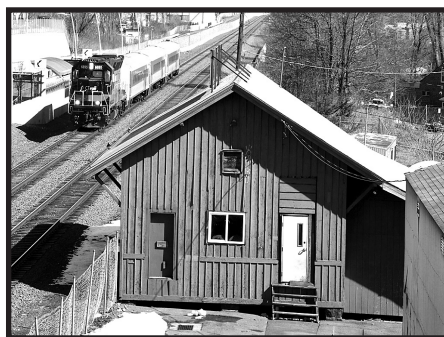
By Robert A. LaMay



Amtrak train arrives at
Wallingford CT



CTrail trains leaves station at
Berlin CT



CTrail train approaches old freight
house at Newington Jct CT



Conn Eastern RR Museum scene
at Willimantic CT



Shore Line East train
at New London CT



Amtrak shuttle train
at Wallingford CT

Booking Conditions



“We expect people to act respectful in a cordial manner. We also expect our passengers to follow instruction from supervised personnel on all transportation vehicles, i.e., trains, buses, boats, etc. It is important instructions be followed to maintain safety of all participants.

If any passenger is disruptive or refuses to follow direction they are subject to be prohibited from taking part in future trips. To be clear we consider non-compliance with safety directive to be a serious matter as well as use of foul language and disruptive conduct. Any of these behaviors will be grounds for prohibition of participation in future trips and events.”

Handicapped Information

The Mystic Valley Railway Society, Inc., endeavors to provide its passengers with information regarding the accessibility of and facilities available for the benefit of our handicapped ridership. In doing so, we make inquiries of the facilities visited and equipment used on each of our trips. Accordingly, since we merely convey this information, we cannot be held responsible for its accuracy.

If you are not self-sufficient and have special needs, you must travel with a companion who can provide assistance to you. By making a reservation for a trip, you are certifying that you do not have any mental, physical or other medical/disability condition that could compromise your safety or that of other trip participants. If you are uncertain about the demands or difficulties of a particular trip or event, please call us for details.

RESERVATIONS

Please send a separate check and SASE for each trip. This way, if a trip did have to cancel, your check could be returned immediately. You will now find a separate coupon for each trip. If you want to come as a group, please list your group together in one reservation and sent to one address.

idea

TRIP IDEAS!

Have you visited somewhere around New England that you think the Mystic Valley Railway Society's members and friends would enjoy as much as you did?



PLEASE LET US KNOW!

Our Trip Team is always looking for new ideas, places to eat, things to see and do, train rides, museums, boat rides, etc.

With your help we can offer trips at a reasonable cost, that otherwise might have been overlooked.

Please contact us by e-mail at contactus@mysticvalleyns.org or via regular mail at

MVRS, P. O. Box 365486, Hyde Park, MA 02136-0009.

Please provide your phone number or e-mail address, so that we may contact you, should we need more information.

THE MVRS TRIP TEAM IS HERE FOR YOU! BE THERE FOR THEM!

**DEADLINE FOR NEXT ISSUE
Thursday August 1, 2019**



WEEKEND DAY TRIPS

BUTTERFLIES IN DEERFIELD

Saturday – May 25, 2019 Fare: \$99 PP

Enjoy springtime as we traverse the roads to Deerfield MA. After a luncheon buffet at the Deerfield Inn watch a video on life at Old Deerfield Village, and browse the gift shop. Then visit Magic Wings where you can stroll among thousands of domestic and exotic butterflies in their indoor conservatory.

FEATURES:

Round trip comfortable motor coach
Luncheon buffet at the Deerfield Inn
Old Deerfield Village
Magic Wings Butterfly Conservatory and Garden



TIMETABLE

8:00am	Wellington T (Rte 16 – Medford)	7:00pm
8:30am	Braintree T (Exit 17, Rte 3)	6:30pm
9:00am	Riverside T (Exit 22, 95/128)	6:00pm

All times are approximate and subject to change

Reserve in advance – capacity limited. Please read carefully and complete all details when requesting passage. Please include FULL NAMES OF ALL IN YOUR PARTY when completing this form. Tours run rain or shine. Timetable is subject to change. NO REFUNDS.

BUTTERFLIES IN DEERFIELD

Saturday – May 25, 2019 Fare: \$99 PP



PLEASE PRINT ALL INFORMATION

Name(s): _____ Phone# _____
Address _____ Boarding Station _____
City/Town _____ State _____ Zip _____
Email _____
Emergency Contact Name & Phone # _____

Please make all checks payable to: Mystic Valley Railway Society, Inc. and mail to: MVR, P.O. BOX 365486, Hyde Park, MA 02136-0009. Thank you.
Information for handicapped Accessibility will be provided upon request. Your tickets and itineraries will be mailed about 5 days prior to departure.
Note: A service charge of \$20 will be assessed for returned checks.

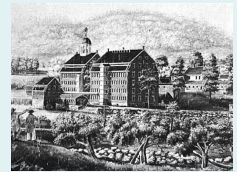
Different Faces of Lowell

Saturday – June 22, 2019 Fare: \$100 PP

In the cradle of the American Industrial Revolution, visit the birthplace one of Lowell MA's most well-known sons. Artist James McNeill Whistler, of "Whistler's Mother" fame, lived here until his father took a job in Russia designing and building railroads. After a delicious buffet at Cobblestones Restaurant travel to Lowell National Historical Park. Take a 90-minute guided canal boat tour and learn how waterways helped form this industrial powerhouse. Time permitting, tour the Visitor's Center museum and gift shop.

FEATURES:

Round Trip Comfortable Motor Coach
Whistler House Museum of Art
Cobblestones Restaurant
Lowell National Park Canal Tour



TIMETABLE

9:00am	Braintree T (Exit 17, Rte 3)	7:00pm
9:30am	Riverside T (Exit 22, Rte 95/128)	6:30pm
10:00am	Wellington T (Rte 16 – Medford)	6:00pm

All times are approximate and subject to change
An alternative to the canal tour may be substituted
if the weather is inclement.

Reserve in advance – capacity limited. Please read carefully and complete all details when requesting passage. Please include FULL NAMES OF ALL IN YOUR PARTY when completing this form. Tours run rain or shine. Timetable is subject to change. NO REFUNDS.

Different Faces of Lowell

Saturday – June 22, 2019 Fare: \$100 PP



PLEASE PRINT ALL INFORMATION

Name(s): _____ Phone# _____
Address _____ Boarding Station _____
City/Town _____ State _____ Zip _____
Email _____
Emergency Contact Name & Phone # _____

Please make all checks payable to: Mystic Valley Railway Society, Inc. and mail to: MVR, P.O. BOX 365486, Hyde Park, MA 02136-0009. Thank you.
Information for handicapped Accessibility will be provided upon request. Your tickets and itineraries will be mailed about 5 days prior to departure.
Note: A service charge of \$20 will be assessed for returned checks.

Mt. Washington Cog Railway 150th Anniversary Season

Sunday – July 14, 2019 Fare: \$160 PP

It is 150 years since the Cog Railway first reached the summit of Mt. Washington. Enjoy the atmosphere of the iconic Mt. Washington Hotel during lunch and take in the lovely view of the Presidential Range from the porch. After lunch, experience a three-hour diesel-hauled round-trip train ride on New England's highest peak. With an hour at the summit, there'll be time to visit the weather observatory, then back at base camp browse the museum gift shop.

FEATURES:

Round Trip Comfortable Motor Coach
Lunch at Mt. Washington Hotel restaurant
Round Trip on Mt. Washington Cog Railway
Summit Weather Observatory
Cog Railway Museum and Gift Shop



TIMETABLE

8:00am	Braintree T (Exit 17, Rte 3)	10:00pm
8:30am	Riverside T (Exit 22, Rte 95/128)	9:30pm
9:00am	Wellington T (Rte 16 – Medford)	9:00pm

All times are approximate and subject to change

Reserve in advance – capacity limited. Please read carefully and complete all details when requesting passage. Please include FULL NAMES OF ALL IN YOUR PARTY when completing this form. Tours run rain or shine. Timetable is subject to change. NO REFUNDS.

Mt. Washington Cog Railway 150th Anniversary Season

Sunday – July 14, 2019 Fare: \$160 PP

MEAL CHOICES:

- ☐ Roasted Chicken Breast w/ Lemon-Cranberry Chutney
☐ Atlantic Salmon, basil pesto
☐ Vegetable strudel, toasted tomato coulis

PLEASE PRINT ALL INFORMATION

Name(s): _____ Phone# _____
Address _____ Boarding Station _____
City/Town _____ State _____ Zip _____
Email _____
Emergency Contact Name & Phone # _____

Please make all checks payable to: Mystic Valley Railway Society, Inc. and mail to: MVR, P.O. BOX 365486, Hyde Park, MA 02136-0009. Thank you.
Information for handicapped Accessibility will be provided upon request. Your tickets and itineraries will be mailed about 5 days prior to departure.
Note: A service charge of \$20 will be assessed for returned checks.

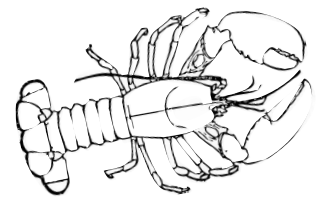
BAILEY'S ISLAND

Saturday – July 20, 2019 Fare: \$95 PP

Travel to Bailey's Island over the world's only granite cribstone bridge, a Historic Civil Engineering Landmark, built in 1927 then rebuilt in 2009-11. Linger over a traditional Maine clam bake while enjoying views of the ocean and rocky coast. Spend the afternoon at the Land's End gift shop before heading home.

FEATURES:

Round trip comfortable motor coach
Traditional Maine clam bake
Land's End gift shop



TIMETABLE

7:30am	Braintree T (Exit 17, Rte 3)	7:30pm
8:00am	Riverside T (Exit 22, 95/128)	7:00pm
8:30am	Wellington T (Rte 16 – Medford)	6:30pm

All times are approximate and subject to change

Reserve in advance – capacity limited. Please read carefully and complete all details when requesting passage. Please include FULL NAMES OF ALL IN YOUR PARTY when completing this form. Tours run rain or shine. Timetable is subject to change. NO REFUNDS.

BAILEY'S ISLAND

Saturday – July 20, 2019 Fare: \$95 PP

MEAL CHOICES:

- ☐ Lobster
☐ Half-chicken

PLEASE PRINT ALL INFORMATION

Name(s): _____ Phone# _____
Address _____ Boarding Station _____
City/Town _____ State _____ Zip _____
Email _____
Emergency Contact Name & Phone # _____

Please make all checks payable to: Mystic Valley Railway Society, Inc. and mail to: MVR, P.O. BOX 365486, Hyde Park, MA 02136-0009. Thank you.
Information for handicapped Accessibility will be provided upon request. Your tickets and itineraries will be mailed about 5 days prior to departure.
Note: A service charge of \$20 will be assessed for returned checks.



A Railroad to the Moon – 150 years of The Cog

By Dirk Hertel

On June 22, 2019 the Mt. Washington Cog Railway in New Hampshire will celebrate its 150th anniversary, and on Sunday July 14th MVRS passengers can “experience a three-hour diesel-hauled round-trip train ride on New England’s highest peak.” Since 1869, The Cog has taken visitors up Mount Washington, a 6,288 ft peak in the Presidential Range of the White Mountains of New Hampshire. Though known for its fierce weather, if the weather is so inclined, the lucky visitor may get sweeping views reaching as far as upstate New York.

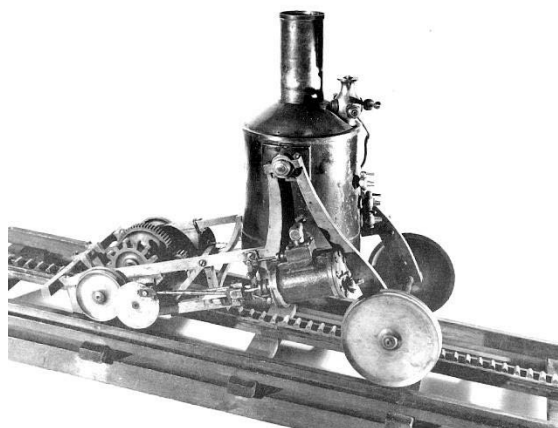
That the mountain railway is still running and thriving today is due to the determination, foresight and engineering skills of its builder, Sylvester Marsh.



Born in 1803 in Campton NH, he made his fortune in the emerging meat packing and cereal industries of Chicago, while inventing steam-driven appliances and processes on the way, for example the coffee percolator and a breakfast cereal Marsh’s Caloric Dried Meal. In 1855, after retirement at age 52, he returned East to pursue an idea that came to him three years earlier while on a difficult hike up Mount Washington in bad weather: an ascent by train would be much more pleasant and less hazardous. In 1858 he applied to the New Hampshire legislature for a charter to construct a steam railway up Mount Washington, and it was granted because the project was believed to be as impossible as building a

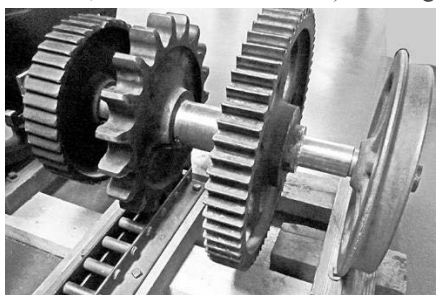
railway to the moon. Though Sylvester Marsh was the first in the world to build a cog railway up a mountain, he was not the first to build a cog steam railway. This was done by John Blenkinsop in 1812 in England. He did not dream of going up a mountain; he was just concerned that iron wheels would slip on iron rails, even if when track is laid on level ground. Therefore, when building the Middleton Railway in Leeds, he equipped it with a rack-and-pinion drive. The 3-foot long sections of cast rail had rack teeth, two per foot, on the outer side, which engaged the teeth of the locomotive’s cogwheel (also called pinion). The locomotive’s steam engine only powered this cogwheel, but that was enough to move the train along its toothed rails.

Sylvester Marsh’s project seemed impossible but his engineering was sound. He started with a working model locomotive (shown below), now in possession of the New Hampshire Historical Society, that demonstrated the feasibility of going



up a steep grade using a rack-and-pinion drive. Its boiler hung from A-frames and so could pivot to remain level no matter how steep the grade. This boiler powered a 2-cylinder steam engine that turned a cog wheel which engaged with the rack fixed in the center of the track. The rack resembles a ladder, with 4-inch long and 1½ inch thick iron rungs spaced 4 inches apart. The resulting 2½

inch gaps between the rungs are wide enough for snow and tree debris to fall through rather than becoming lodged. Like other railways, locomotives and passenger cars run on rails, but The Cog’s are 4 foot 8 inches wide, half an inch narrower than standard gauge. The track was built entirely on trestles, being easier to construct and maintain on the steep rugged terrain than ballasted track that would be vulnerable to erosion. The railway is very steep: on its 3-mile run up the western slope of Mount Washington it climbs from 2,700 feet to 6,288 feet. The average grade is over 25%, with an astounding 37% at the steepest part, Jacob’s Ladder. Despite these daringly steep grades and its age, The Cog has an excellent safety record. Sylvester Marsh designed his cog mechanism, patented in 1861, with safety in mind. The cogwheel (shown below, Wikimedia Commons) has long teeth and is of large enough diameter that at least two of its teeth are fully engaged with the rack at any time. This ensures that the engine cannot ride up under strain and derail. Even if the locomotive derails, the passenger car has its own brakes and is not coupled to the locomotive, meaning it will stay on the track and not run away. The cars are pushed uphill and ride their brakes downhill, closely following the locomotive but barely touching it. When climbing, ratchet-and-pawl mechanisms prevented rollback of locomotive and car. Because of the merits of Sylvester Marsh’s exacting and safety-conscious engineering, The American Society of Civil Engineers and The American Society of Mechanical Engineers jointly designated The Cog as a National Historic Mechanical and Civil Engineering Landmark in 1976.



With its vertical boiler, second-hand from a sawmill engine, Marsh’s first locomotive closely resembled his demonstration model. The boiler looked like a pepper-sauce bottle hence the nickname ‘Old Peppersass’. Built by Campbell, Whittier and Co. of Roxbury MA, it was shipped in pieces to the railhead then reassembled on site. On August 29, 1866 its first experimental run on a length of track was a successful demonstration of the driving and safety equipment. This instilled confidence in skeptical investors, and once their money began pouring in it took only 3 years to reach the summit where the first train arrived on July 3,

1869. In the first 7 years of operation investors received a return of 88% on their original investment. Engineer Marsh made little money from his railway, but it gave him great pleasure. The Swiss Consul came to visit, and the success of The Cog encouraged the Swiss to build their first cog railway up Mount Rigi in 1870. Although the Riggerbach rack system closely resembled Marsh’s, and the first Swiss cog locomotive *Old Peppersass*, it is unlikely that the Swiss walked away with Marsh’s ideas; this was just another case of “simultaneous invention” where different people come up with similar ideas simply because the time was ripe.

Although locomotive designers soon abandoned the vertical boiler because it had limited efficiency, using a horizontal boiler on a steep mountain railway is also tricky: when tilted the uphill end would run dry. This was the leading cause of boiler explosions. From 1875 to 1908, seven new locomotives were built by the Manchester Locomotive Works (later Alco), with their tilted horizontal boilers giving the characteristic crooked appearance of a mistreated toy locomotive. These had a 0-2-2-0 wheel arrangement where two cogwheels, each powered by two cylinders, transmitted increased power to the rack. The oldest locomotives still in operation are the No. 2 *Ammonoosuc* (1875) and No. 9 *Waumbek* (1908).

After Sylvester Marsh died in 1884, The Cog was taken over by the Concord and Montreal RR, then in 1889 by the Boston & Maine. In 1931 it was purchased by

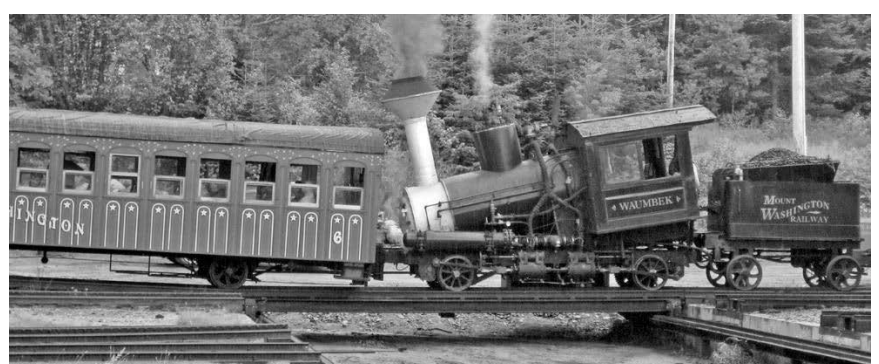


Col. Henry N. Teague, and it remained in the capable hands of the Teague family until 1983. Amongst the lasting achievements of their era were the rebuilding of Jacob’s Ladder after the 1938 hurricane, installation of spur sidings in 1941 (with such complicated turnouts that a carefully choreographed 9-step manual switching process was required), and the new steam locomotive No. 10 *Col. Teague* (later renamed *KroFlite*) in 1972. That same year Ellen C. Teague, the world’s first female railroad president, secured exemption from the air pollution act from the NH legislature for all steam locomotives in the state. In 1983 ownership changed to the Presby and Bedor families,

who embarked on a program of modernization to ensure viability of The Cog in future decades. The most visible change has been replacing steam power by new biodiesel locomotives. This started with the M-1 *Wajo Nanatassis* in 2008. Since then the fleet of diesels has increased to six, with nearly identical designs to minimize maintenance costs. Instead of burning about 1 ton of coal at a cost of \$250 and boiling up 1,000 gallons of water, these new locomotives burn 18 gallons of 20% biodiesel blend while reducing the uphill travel time from 1 hour to 36 minutes, giving visitors more time at the summit. New passenger cars with higher seating capacity but still with a traditional ‘Victorian’ appearance have been built. Replacing the manual switches by electrical-hydraulic ones has enabled the installation of new sidings halfway and at the summit, allowing trains to pass without the need for backing up. Steam is still offered once a day and on special occasions with No. 2 and 9. The other remaining steam locomotives are in backup storage at the shops or on display at various locations. No. 1 *Old Peppersass* was on show in January 2019 at the Amherst Railway Society’s Railroad Hobby Show in West Springfield MA. We close with photos of The Cog, taken by our members over many years. The first one above, taken by Allan H. Wiswall, shows No. 9 *Waumbek* crossing the Ammonoosuc River trestle in 1956.



Up and down trains No. 3 *Agiocochook* and No. 4 *Summit* meet at Skyline Siding in 1996. Photographer: Stuart Lovell.



No. 9 *Waumbek* outside the shops, ready for departure on July 28, 2012. Photographer: Dirk Hertel.

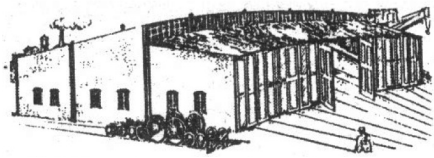


Find us on
Facebook

www.facebook.com/MysticValleyRailwaySociety



The Roundhouse



The MBTA has added a new Blue Hill Avenue Station to the Fairmount Line. There is an entrance from Blue Hill Ave. and another from Cummins Highway. This is former New Haven RR trackage. [milesintransit.com]

The Boston Herald reports that riding the T will cost more starting in July after the MBTA's oversight board amended and passed a set of fare hikes on March 11 over heated opposition. The board voted to approve a plan to raise fares by an average of 6 percent — though for now bus fares and the T's discount programs will not change. The cost of a single-ride subway ticket will rise from \$2.25 to \$2.40 starting July 1.

The Boston Globe reports that the MBTA has received the first of its order of ten rebuilt F40PH-3C locomotives. The re-build program, costing about \$3 million per locomotive, will extend the life of each unit about 20 years. Positive train control equipment has been added as part of the refurbishment, along with other safety equipment. The F40PH-3C locomotives are being rebuilt by Motive Power Inc. in Boise ID. All 10 are expected to be in service by September of this year. The first back from rebuilding is number 1054.

"What that means for customers," MBTA General Manager Steve Poflak said, according to the Globe, "is there's going to be greater reliability in terms of fewer breakdowns and more reliable trains. ... This was one of the lowest performers and we expect it will be one of the highest performers now."

The Boston Globe also reports that the MBTA is in preliminary discussions with Amtrak about leasing some electric locomotives for Boston — Providence service. Do not look for

electrics hauling commuter trains real soon. These are only preliminary discussions. The idea of running diesels under catenary always seemed a bit silly.

TRAINS Magazine reports that former Amtrak CEO Joseph H. Boardman died on March 7.

On 2/3/2019 Amtrak Train Number 54 the Vermonter struck a truck in Charlestown NH. There were 74 people aboard but no injuries on the train. People in the truck got out in time. [AmtrakNortheast@yahoo.com]

Progressive Railroading reports that short-line conglomerate United Rail has acquired New Hampshire's New England Southern RR whose headquarters are in Concord NH. New England Southern always did sound like a strange name since New Hampshire is not in Southern New England.

Progressive Railroading reports that BNSF Railway is making extensive use of drones to inspect its rails and bridges. BNSF has partnered with Collins Aerospace in the operation of its drones which weigh 55 pounds.

Progressive Railroading also has a report on relieving freight and passenger congestion in Chicago. Since it was launched in 2003, the Chicago Region Environmental and Transportation Efficiency (CREATE) program has targeted ways to relieve freight and passenger train congestion in the nation's busiest rail hub. Chicago is the No. 1 chokepoint in the US rail network, with about 760 passenger and 500 freight trains traversing the large metropolitan area each day.

Estimated to cost \$4.4 billion, the CREATE program involves 70 rail and road improvement projects in the Chicagoland area, 29 of which had been completed through November 2018. A public-private partnership among more than a dozen railroads and government agencies is pursuing the projects which range from new tracks to grade separations to highway bridges to signal upgrades.

The partners include the Associa-

tion of American Railroads (AAR), Illinois and Chicago departments of transportation, Cook County, Amtrak, Metra, BNSF Railway Co., Canadian Pacific, CN, CSX, Norfolk Southern Railway, Union Pacific Railroad, Belt Railway Co. of Chicago (BRC) and Indiana Harbor Belt Railroad Co. (IHB).

After all the work is completed — which will take a number of years due to additional funding needs and efforts to complete more preconstruction tasks, such as environmental studies — the area's rail network will be able to accommodate many more freight trains. CREATE partners project that by 2051, the revamped network will handle up to 50,000 more of them annually. Meanwhile, as individual projects are finished, passenger train delays will be eased for Amtrak and Metra, and commuting delays will be reduced for motorists and pedestrians.

The next major cog in the CREATE program that figures to significantly alleviate rail congestion and help area commuters is the 75th Street Corridor Improvement Project (CIP). In addition, the somewhat-related Argo connections (CREATE project B9) might start next year before the CIP gets rolling construction-wise.

Slated for completion in 2025, the \$474 million CIP includes four separate projects that are expected to start at different times over the next several years. CREATE partners aim to separate several freight- and passenger-rail lines in the 75th Street corridor that runs through Chicago's Ashburn, Englewood, Auburn Gresham and West Chatham neighborhoods. CIP projects include the Forest Hill Flyover 71st Street grade separation, Belt and 80th Street junction replacements, and Rock Island connection.

Railpace reports that VIA Rail Canada awarded a \$989 million contract to German manufacturer Siemens for a fleet of new cars. The cars will be built in Sacramento CA. This decision was attacked by Canadian la-

bor groups which wanted the cars to be built in Canada. Siemens Canada employs 4,300 workers at 44 Canadian locations.

Railpace Feb 2019 issue had a three-and-a-half-page article on Montreal's Deux Montagnes Commuter Line. This service was operated for many years by Canadian National (CN). The line was popular with rail photographers because CN continued to operate ancient boxcab electric locomotives until 1995. Boxcab number 6710 is on display adjacent to Deux Montagnes Terminal. The Agence Métropolitaine de transport (AMT) bought the Deux Montagnes line from CN in 2014. In 2017 a new entity, the Réseau de Transport Métropolitain (RTM), was formed and the AMT Deux Montagnes line was re-branded EXO Line 6. EXO is a prefix meaning outer. EXO references a commuter rail and bus system that mostly brings people from outer areas into Montreal. If you would like to see this operation, you have a little less than one year to visit. In January 2020 a major construction project will start. The new system they are building will look more like a modern subway than commuter rail. Already Friday night and weekend service has been eliminated to allow construction crews to work. The Mount Royal Tunnel is a railway tunnel located in Montreal, Quebec. The tunnel is third longest in Canada and connects the city's Central Station located in Downtown Montreal with the north side of the Island of Montreal and Laval, passing through Mount Royal. The tunnel is a little over 100 years old and was built for the Canadian Northern Railway which encountered financial difficulties and was nationalized to become a key component of Canadian National Railways. The tunnel used to carry long distance passenger trains but in recent years has carried only commuter trains.

Lines from Ireland

At the end of January, the National Transport Authority (NTA) published a notice seeking the provision of pre-owned/second-hand diesel multiple unit vehicles for passenger use on the Iarnród Éireann/Irish Rail network. Applicants were advised that the National Transport Authority would offer them a seven-year lease agreement or more, or alternatively was prepared to purchase these units directly, with Iarnród Éireann acting as their nominated agent. Between 60 to 80 vehicles were required which had to be capable of operating in units of three or four vehicles with an engineer's cab at each end of each unit. Vehicles must be available for delivery prior to February 28th 2020. The closing date for sealed tenders was February 26th 2019.

Iarnród Éireann's project to renew and replace the roof of Dublin's Pearse Station commenced in March. The roof structure, which dates from the 1880s, is in poor condition, and protective mesh netting has been in place in the station, below roof level, in recent years to protect customers and rail services due to the corrosion which has occurred. Its replacement has been identified by Iarnród Éireann as a crucial safety project. While the roof is not a protected heritage structure, Iarnród Éireann has specified that the external appearance and

character of the structure will be maintained. The project, which will cost US\$19M is funded by the National Transport Authority and will take place over a period of 23 months. While the vast majority of the work will not affect rail services and is also planned to take place during daytime to reduce impact on the surrounding areas, Iarnród Éireann anticipates that the station will need to be closed for up to 13 weekends over the 23-month period for round-the-clock works, involving crane operation to install sections of the new structure. The first of these weekend closures took place on Saturday/Sunday April 13th / April 14th.

Pearse Station in Westland Row, Dublin is Ireland's second busiest train station and the busiest commuter station on the network. The station opened in 1834 and was the original terminus of the Dublin & Kingstown Railway Company, the first railroad line in Ireland operating between (Westland Row to Kingstown — Pearse to Dun Laoghaire). The station sees DART, Commuter and Rosslare Intercity services operate thru, with up to nine million journeys beginning or ending at it each year.

The roof structure dates from the 1880s and comprises two main areas. The main station area roof comprises forty barreled roof trusses over thirty-

eight bays, with additional gable end structure at both ends. The span of the roof trusses is approximately 28m, with bays spaced at approximately 4.25m centre-to-centre. The trusses are longitudinally linked by timber purloins along the length of the running shed. The trusses are laterally braced with ties and struts.

The roof fabric of the main station area is divided into 3 distinct sections, comprising:

- the upper glazed atrium section;
- the middle metal decking on timber section; and
- the lower polycarbonate sheeted section (dates from 1990s)

Adjacent to the main station roof is a second similar roof over a station infrastructure area. This roof is smaller and comprises nineteen trusses over 18 bays. The span of this second roof is approximately 17m, with bays spaced at approximately 4.25m centre-to-centre. The roof fabric of this smaller roof is similar to the main running shed. The main trusses of the roof provide the primary roof support. These trusses are either supported off a spandrel section, its supporting cast iron column or off a brick corbel where there is no spandrel present.

The works will consist of the replacement of all primary trusses with new steel trusses, or similar, and replacement of the existing roofing ma-

terials with new materials chosen to maintain the external appearance and character of the structure.

Significant works will also be necessary to separate the works from both the operations of the station and from the surrounding high-density area which includes residential, commercial, educational, and amenity areas. A crash deck will be installed over the main station for the duration of the works.

Alterations were announced in March by the National Transport Authority to the route of Metrolink which is intended to deliver a fast, high frequency and high capacity metro rail service from Swords in north County Dublin to Sandyford in south County Dublin. The National Transport Authority announced that the project, which is still at the planning stage, and overseen by Transport Infrastructure Ireland and the National Transport Authority, would not continue south of Charlemont Luas station as work on the route from there to Sandyford would have meant a prolonged disruption to the Luas Green line for up to four years. However, this decision was not welcomed by many of those living in this part of Dublin on the grounds that this area needs to be served by better public transport.

February to April 2019

By James Scannell



WEEKEND DAY TRIPS

FUNNY MONEY & LOBSTERFEST

Sunday – August 11, 2019 FARE: \$108 PP

Enjoy the day down in Rhode Island for our summer trip to the Newport Playhouse. We will partake in a scrumptious buffet complete with lobsters. Then see the hilarious play Funny Money about a CPA who gets the wrong briefcase, then a chance to start over after police involvement, and to the bewilderment of all. Afterwards there is also a cabaret show.

FEATURES:

Round trip comfortable motor coach
Buffet with lobster
Theatre play and cabaret



TIMETABLE

8:00am	Wellington T (Rte 16 – Medford)	7:30pm
8:30am	Riverside T (Exit 22, 95/128)	7:00pm
9:00am	Braintree T (Exit 17, Rte 3)	7:00pm



All times are approximate and subject to change

Reserve in advance – capacity limited. Please read carefully and complete all details when requesting passage. Please include FULL NAMES OF ALL IN YOUR PARTY when completing this form. Tours run rain or shine. Timetable is subject to change. NO REFUNDS.

FUNNY MONEY & LOBSTERFEST

Sunday – August 11, 2019 FARE: \$108 PP



PLEASE PRINT ALL INFORMATION

Name(s): _____ Phone# _____
Address _____ Boarding Station _____
City/Town _____ State _____ Zip _____
Email _____
Emergency Contact Name & Phone # _____

Please make all checks payable to: Mystic Valley Railway Society, Inc. and mail to: MVR, P.O. BOX 365486, Hyde Park, MA 02136-0009. Thank you.
Information for handicapped Accessibility will be provided upon request. Your tickets and itineraries will be mailed about 5 days prior to departure.
Note: A service charge of \$20 will be assessed for returned checks.

WHITE MTN WILDCAT

Sunday – September 15, 2019 FARE: \$110 PP

Come with us as we enjoy a fall day in the beautiful White Mountains of New Hampshire. Brunch at the White Mountain Hotel in North Conway will be scrumptious and plentiful. The hotel has a small gift shop and also a Pro Shop for golf-related items. Then we'll travel north to Wildcat Mountain, east of Mt Washington, for a gondola ride to see the vista.

FEATURES:

Round trip comfortable motor coach
Brunch
Wildcat gondola ride



TIMETABLE

7:00am	Braintree T (Exit 17, Rte 3)	8:00pm
7:30am	Riverside T (Exit 22, 95/128)	7:30pm
8:00am	Wellington T (Rte 16 – Medford)	7:00pm



All times are approximate and subject to change

Reserve in advance – capacity limited. Please read carefully and complete all details when requesting passage. Please include FULL NAMES OF ALL IN YOUR PARTY when completing this form. Tours run rain or shine. Timetable is subject to change. NO REFUNDS.

WHITE MTN WILDCAT

Sunday – September 15, 2019 FARE: \$110 PP



PLEASE PRINT ALL INFORMATION

Name(s): _____ Phone# _____
Address _____ Boarding Station _____
City/Town _____ State _____ Zip _____
Email _____
Emergency Contact Name & Phone # _____

Please make all checks payable to: Mystic Valley Railway Society, Inc. and mail to: MVR, P.O. BOX 365486, Hyde Park, MA 02136-0009. Thank you.
Information for handicapped Accessibility will be provided upon request. Your tickets and itineraries will be mailed about 5 days prior to departure.
Note: A service charge of \$20 will be assessed for returned checks.

HOBO RAILROAD & KELLERHAUS

Saturday – September 28, 2019 FARE: \$89 PP

Come with us as we see lovely Meredith NH where the fall colors should be turning. Enjoy a full turkey dinner on the Hobo Railroad to warm you up from a brisk fall morning. After a train ride around the lake we will board the bus and ride to the Kellerhaus for ice cream, candy and possibly some early Christmas shopping.

FEATURES:

Round trip comfortable motor coach
Hobo Railroad
Full turkey dinner



TIMETABLE

8:30am	Braintree T (Exit 17, Rte 3)	7:30pm
9:00am	Riverside T (Exit 22, 95/128)	7:00pm
9:30am	Wellington T (Rte 16 – Medford)	6:30pm



All times are approximate and subject to change

Reserve in advance – capacity limited. Please read carefully and complete all details when requesting passage. Please include FULL NAMES OF ALL IN YOUR PARTY when completing this form. Tours run rain or shine. Timetable is subject to change. NO REFUNDS.

HOBO RAILROAD & KELLERHAUS

Saturday – September 28, 2019 FARE: \$89 PP



PLEASE PRINT ALL INFORMATION

Name(s): _____ Phone# _____
Address _____ Boarding Station _____
City/Town _____ State _____ Zip _____
Email _____
Emergency Contact Name & Phone # _____

Please make all checks payable to: Mystic Valley Railway Society, Inc. and mail to: MVR, P.O. BOX 365486, Hyde Park, MA 02136-0009. Thank you.
Information for handicapped Accessibility will be provided upon request. Your tickets and itineraries will be mailed about 5 days prior to departure.
Note: A service charge of \$20 will be assessed for returned checks.

THE FESTIVAL THAT STINKS!

Sunday – September 29, 2019 FARE: \$70 PP

Take a peek at the fall foliage as we travel to Orange in central Massachusetts. The 21st North Quabbin Garlic & Arts Festival celebrates peace, love and garlic. It has a hundred booths featuring not only farmers, garlic and cooking demos but also regional artists and healing arts exhibitors, plus community organizations encouraging recycling and energy conservation. Enjoy music and spoken-word performances on three stages. Plenty of healthy farm-fresh and savory options at the food courts for lunch on your own.

FEATURES:

Round Trip Comfortable Motor Coach
Six hours on your own at Garlic Festival



LUNCH ON YOUR OWN

Food Court and Vendors onsite

TIMETABLE

8:00am	Braintree T (Exit 17, Rte 3)	7:30pm
8:30am	Wellington T (Rte 16 – Medford)	7:00pm
9:00am	Riverside T (Exit 22, Rte 95/128)	6:30pm



All times are approximate and subject to change

Reserve in advance – capacity limited. Please read carefully and complete all details when requesting passage. Please include FULL NAMES OF ALL IN YOUR PARTY when completing this form. Tours run rain or shine. Timetable is subject to change. NO REFUNDS.

THE FESTIVAL THAT STINKS!

Sunday – September 29, 2019 FARE: \$70 PP



PLEASE PRINT ALL INFORMATION

Name(s): _____ Phone# _____
Address _____ Boarding Station _____
City/Town _____ State _____ Zip _____
Email _____
Emergency Contact Name & Phone # _____

Please make all checks payable to: Mystic Valley Railway Society, Inc. and mail to: MVR, P.O. BOX 365486, Hyde Park, MA 02136-0009. Thank you.
Information for handicapped Accessibility will be provided upon request. Your tickets and itineraries will be mailed about 5 days prior to departure.
Note: A service charge of \$20 will be assessed for returned checks.